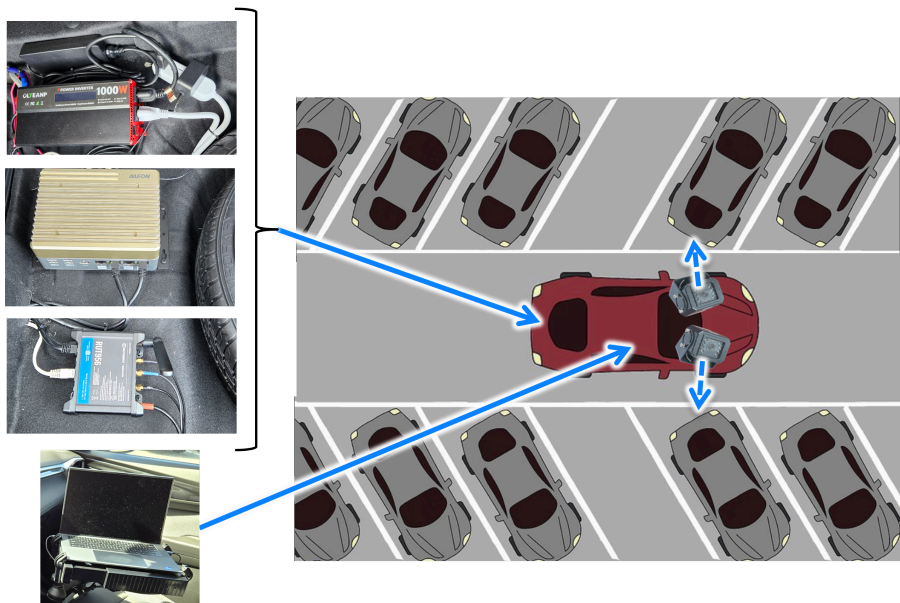


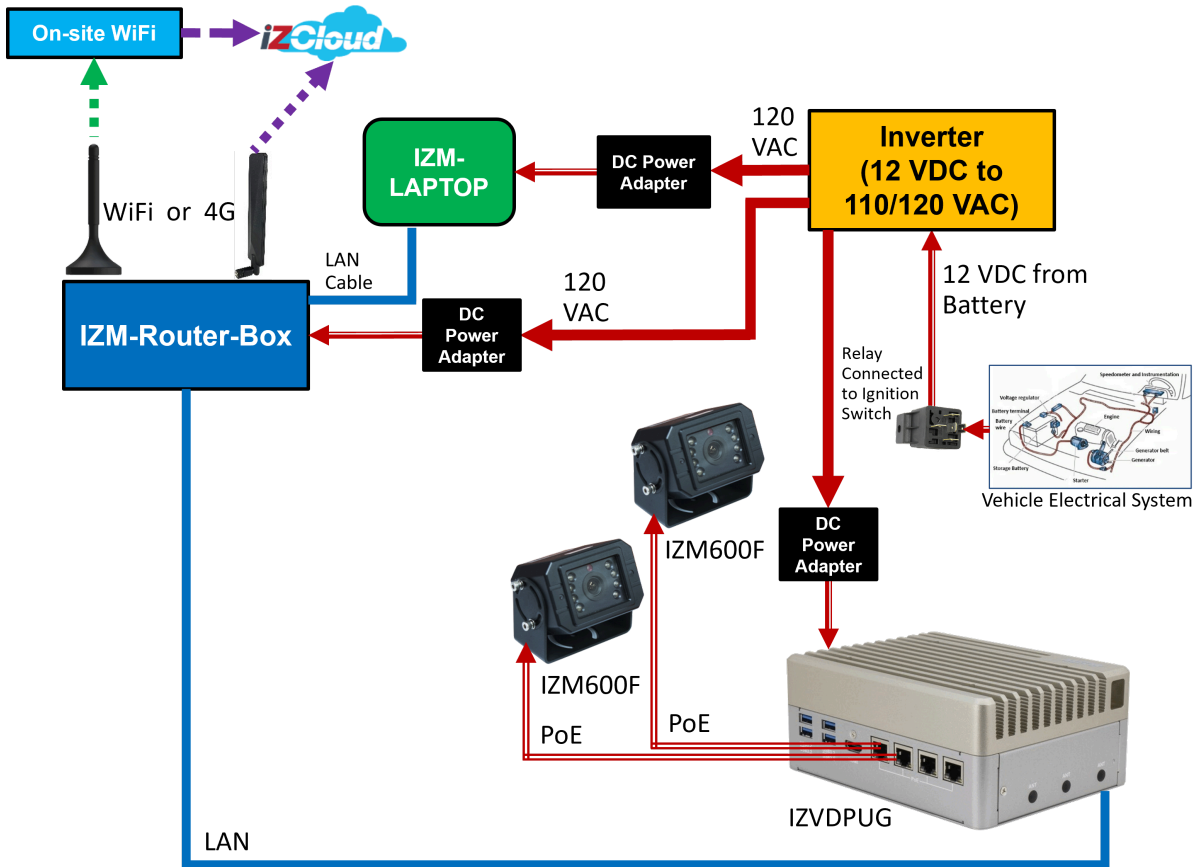
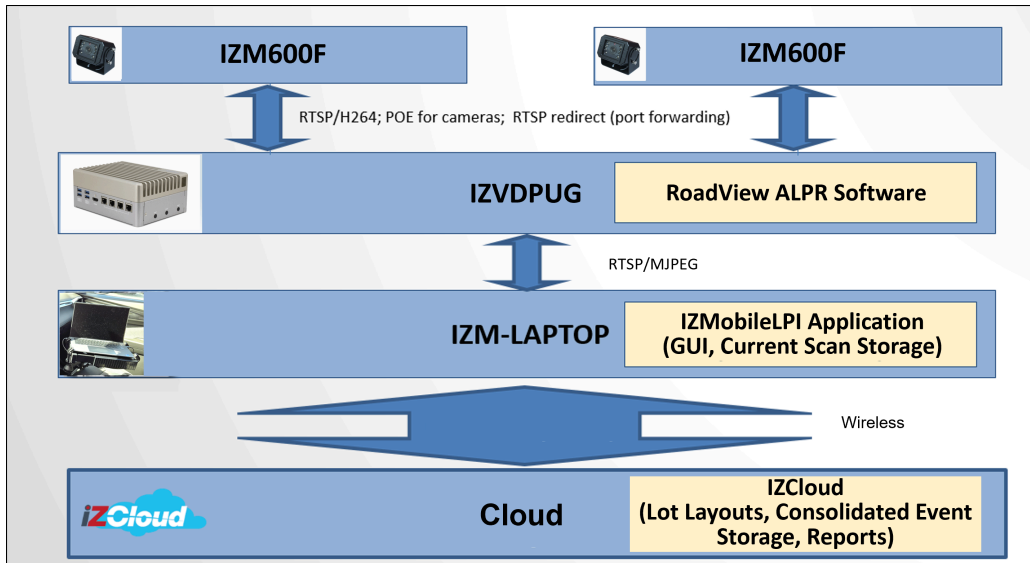
# IZMobileLPI Inventory for Parking Management Solution Overview



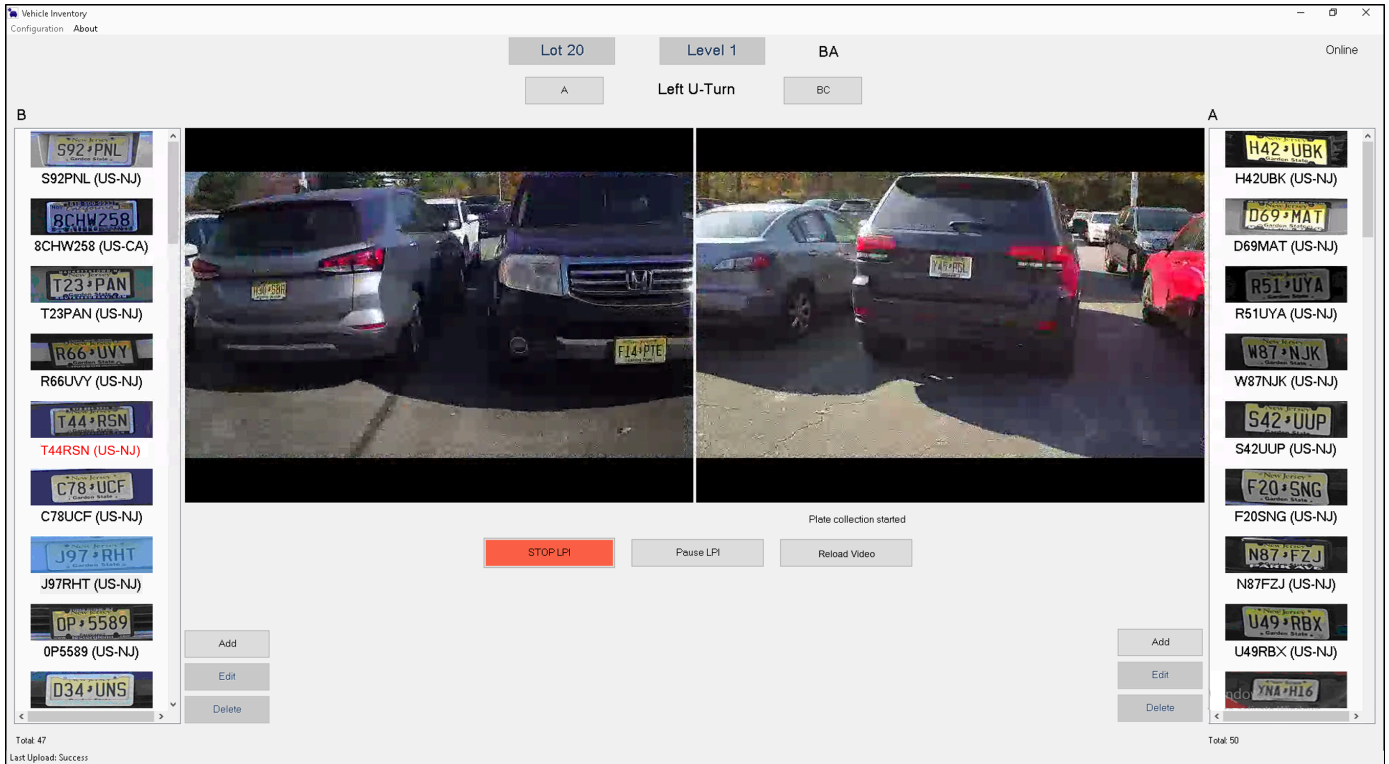
## Key Features and Benefits

- ✓ Route planning - maps submitted by operators are converted to routes for efficient coverage of parking facilities
- ✓ Mobile roving vehicles with mounted cameras provide real-time occupancy vehicle scans
- ✓ RoadView video analytics for highly accurate recognition
- ✓ Manual entry and editing - for plates that are difficult to read or need correction
- ✓ Audio alarm for low plate or state read confidences for operator convenience
- ✓ Plate reads uploaded to the cloud for plate inventory creation and analysis

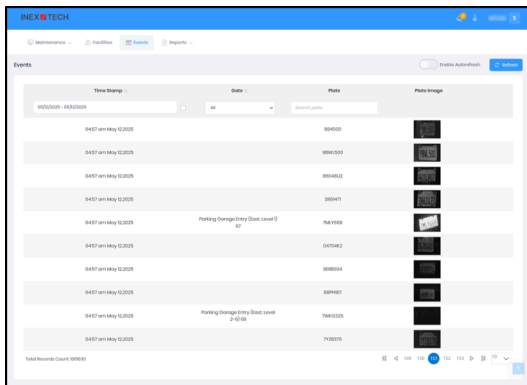
The Inex Mobile License Plate Inventory (IZMobileLPI) system uses IZM600F mobile ALPR cameras mounted on one or more roving vehicles. Each vehicle drives a set route through large parking facilities, such as those found at airports, and automatically captures and creates an inventory of parked cars using RoadView ALPR software technology.



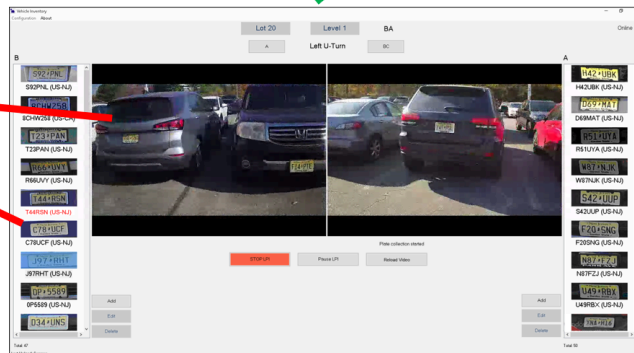
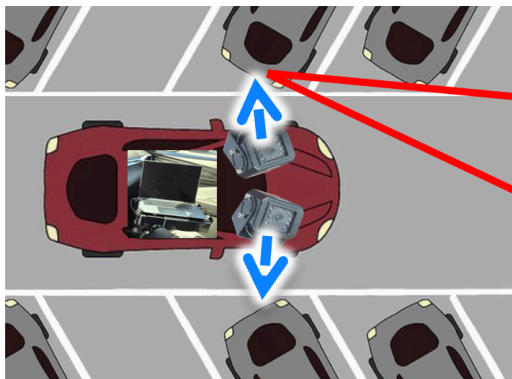
During one of the roving vehicle's "scans" back and forth through the parking lot's rows, each license plate is captured using RoadView software. License plate reads and overview images are stored in a IZMobileLPI application, running on a laptop inside the vehicle. The driver/operator sees a real time video feed from the cameras, license plate images and a license plate recognition results. At any time during the scanning process, the operator can pause to review and edit the plate data.



Once the operator finishes scanning, the operator sends the scan result data to IZCloud-PARK. IZCloud-PARK is a modular, cloud-based suite of Automatic License Plate Recognition (ALPR) services. The newly captured scan data is added to the IZCloud-PARK's records, providing a complete current and historical record of parked vehicles, real-time and scheduled pre-generated reports (see the [IZCloud-PARK documentation](#)).



WiFi



## About Inex

- Thousands of operational lanes
- Hundreds of successfully delivered projects
- US-based head office
- US-based R&D
- US-based support
- US-based Professional Services
- Certification and training programs

Inex Technologies, LLC

155 Willowbrook Blvd., Suite 130

Wayne, NJ 07470, USA

+1-865-671-1400

[www.inextechnologies.com](http://www.inextechnologies.com)

[Sales@inextechnologies.com](mailto:Sales@inextechnologies.com)

[Support@inextechnologies.com](mailto:Support@inextechnologies.com)

© Inex Technologies, LLC - All rights reserved. Specifications are subject to change without notice. All third-party trademarks are the property of their respective owners.

Doc. No. IZMBL-LPI-TDSHEET Ver. 2026-05-07

---

This page was built using the Antora default UI.

The source code for this UI is licensed under the terms of the MPL-2.0 license.