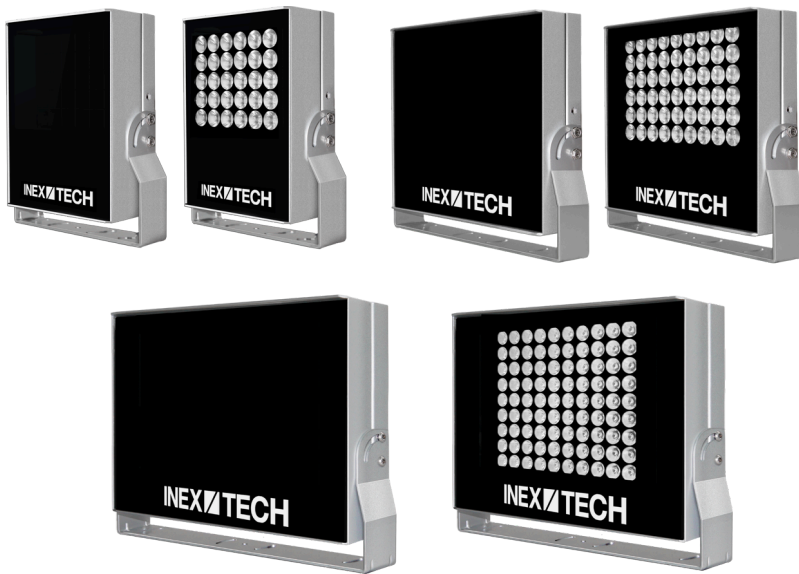


IZS Technical Datasheet

Strobe Illuminator Series

Rev. C



Key Features and Benefits

- ✓ Designed for ITS and Tolling Applications
- ✓ Smart lighting technology - for optimum performance
- ✓ Wide temperature range - operating from -13°F to 140°F (-25°C to 60°C)
- ✓ IP66 ingress protection against extreme moisture
- ✓ NDAA Section 889 compliant

FC **CE**  **RoHS**

Specifications

| Item | | Specification |
|------------------|---------------------------|---|
| LED Illumination | Type | High power LEDs |
| | Flash Activation | Activated by strobe input (3.3 - 24 VDC, opto-isolated) |
| | Wavelength (WVLN) | <ul style="list-style-type: none">• IR = Infrared• DR = Deep Red• CL = Cool White (4000K)• WL = Warm White (3000K) |
| | Number of LEDs (N) | <ul style="list-style-type: none">• 1: 30 LEDs• 2: 60 LEDs• 3: 90 LEDs |
| | Beam Angle (HxV), degrees | <ul style="list-style-type: none">• IZSN-WVLN-10: H10xV10• IZSN-WVLN-20: H20xV20• IZSN-WVLN-30: H30xV30• IZSN-WVLN-H40: H40xV15• IZSN-WVLN-60: H60xV60• IZS2-IR-H120: H120xV20 |
| Environmental | Ingress Protection | IP66 |
| | Operating Temperature | -13°F to 140°F (-25°C to 60°C) |
| | Humidity | 0% to 90% RH |
| Certifications | EMC | FCC Part 15, subpart B; CE |
| | RoHS | RoHS |
| | Eye Safety | IEC62471: <ul style="list-style-type: none">• IR wavelength models: Group 2• DR wavelength models: Group 1• CL wavelength models: Group 1 |
| | NDAA | NDAA Section 889 compliant |

| Item | | Specification | | | | | | | | | | | | | | | | | | | | |
|-----------|---|--|-------|-------------------|------------------|----|----|-----|----|----|-----|----|----|-----|----|----|-----|----|----|-----|----|----|
| Physical | Dimensions (W x H x D)* | <ul style="list-style-type: none"> • IZS1: 7.2 x 9.8 x 3.6 in (183 x 250 x 91 mm) • IZS2: 11.7 x 10.7 x 3.6 in (296 x 271 x 91 mm) • IZS3: 14.5 x 11.4 x 4.2 in (368 x 290 x 107 mm) | | | | | | | | | | | | | | | | | | | | |
| | Unit Weight* | <ul style="list-style-type: none"> • IZS1: 4.2 lbs (1.9 kg) • IZS2: 6.8 lbs (3.1 kg) • IZS3: 10.1 lbs (4.6 kg) | | | | | | | | | | | | | | | | | | | | |
| | Material | Anodized Aluminum | | | | | | | | | | | | | | | | | | | | |
| | Color | Silver | | | | | | | | | | | | | | | | | | | | |
| Interface | Configuration Communication Protocol | RS485 | | | | | | | | | | | | | | | | | | | | |
| | Connectors | Power - 2-pin male connector | | | | | | | | | | | | | | | | | | | | |
| | | Signals - 6-pin male connector | | | | | | | | | | | | | | | | | | | | |
| | Strobe Input | 3.3 - 24VDC, opto-isolated | | | | | | | | | | | | | | | | | | | | |
| Power | Input Voltage | 24 VDC** | | | | | | | | | | | | | | | | | | | | |
| | Power Consumption (measured with 0.5 ms pulse width; 24 VDC input) | <table> <tr> <th>Model</th><th>Frequency (Hz)</th><th>Power (Watts)</th></tr> <tr> <td>S1</td><td>60</td><td>25W</td></tr> <tr> <td>S1</td><td>30</td><td>13W</td></tr> <tr> <td>S2</td><td>60</td><td>50W</td></tr> <tr> <td>S2</td><td>30</td><td>25W</td></tr> <tr> <td>S3</td><td>60</td><td>72W</td></tr> <tr> <td>S3</td><td>30</td><td>36W</td></tr> </table> | Model | Frequency (Hz) | Power (Watts) | S1 | 60 | 25W | S1 | 30 | 13W | S2 | 60 | 50W | S2 | 30 | 25W | S3 | 60 | 72W | S3 | 30 |
| Model | Frequency (Hz) | Power (Watts) | | | | | | | | | | | | | | | | | | | | |
| S1 | 60 | 25W | | | | | | | | | | | | | | | | | | | | |
| S1 | 30 | 13W | | | | | | | | | | | | | | | | | | | | |
| S2 | 60 | 50W | | | | | | | | | | | | | | | | | | | | |
| S2 | 30 | 25W | | | | | | | | | | | | | | | | | | | | |
| S3 | 60 | 72W | | | | | | | | | | | | | | | | | | | | |
| S3 | 30 | 36W | | | | | | | | | | | | | | | | | | | | |

| Item | | Specification |
|--|---------------------------------------|---|
| Accessories Included | | 2-axis outer pan/tilt adjustment bracket |
| | | Power cable, 15 ft (4.6 m) |
| | | Signals cable, 15 ft (4.6 m) |
| Accessories Available (depending on site requirements) | Power Cable | Power Cable for IZS Illuminator (<u>IZCAB-SPWR</u>) - different lengths |
| | Signals Cable | Signals Cable for IZS Illuminator (<u>IZCAB-SSIG</u>) - different lengths |
| | Mounting hardware (in package) | <ul style="list-style-type: none"> • Slotted steel bands with worm drive fasteners for 4" and 12" circular gantry mounting, 2 of each size • Gantry mounting bracket and screws |
| | Mounting hardware (packed separately) | Wall/pole/gantry mounting options |
| | Power Supply | Power Supply 24 VDC** |

* Including outer pan/tilt adjustment bracket

** It is recommended to use an illuminator power supply separate from the camera's supply.

Ordering Information

| Product*** | Available Part Numbers**** | Product Description |
|--|--|------------------------|
| <ul style="list-style-type: none">• IZS1• IZS2• IZS3 | <ul style="list-style-type: none">• IZSN-WVLN-10• IZSN-WVLN-20• IZSN-WVLN-30• IZSN-WVLN-H40• IZSN-WVLN-60• IZS2-IR-H120 | IZS Strobe Illuminator |

*** All models come with a 15 ft cable set; different [IZCAB-SPWR](#) and [IZCAB-SSIG](#) cable lengths can be ordered

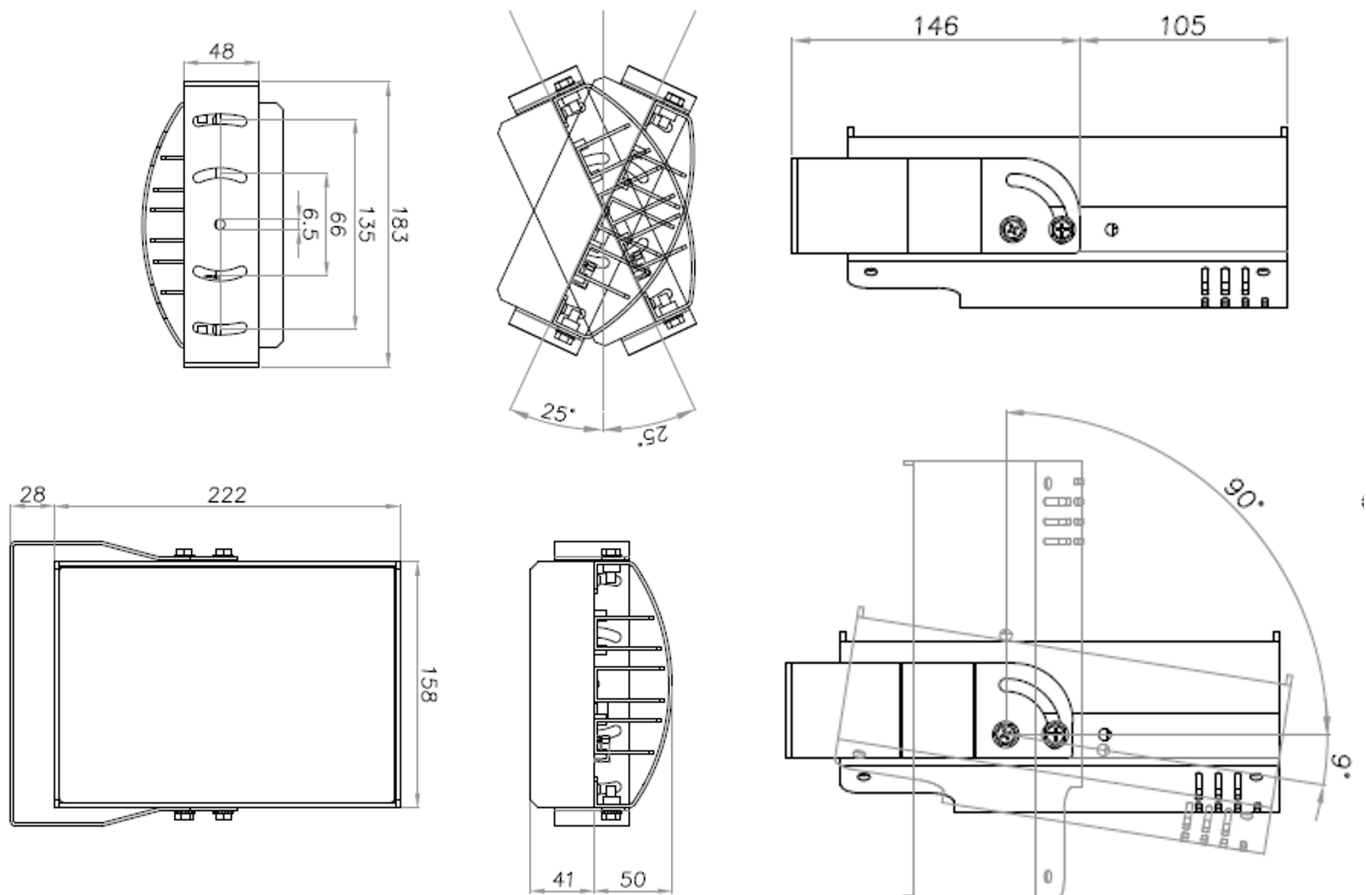
**** IZS[1/2/3]- (IR/DR/CL/WL)-10/20/30/H40/60/H120, where:

- N = 1/2/3 - number of LEDs: 1=30, 2=60, 3=90
- WVLN = Wavelength/type of LEDs:
 - IR - Infrared
 - DR - Deep Red
 - CL - Cool White (4000K)
 - WL - Warm White (3000K)
- 10/20/30/H40/60/H120 - LED beam angle, in degrees:
 - 10 = 10x10
 - 20 = 20x20
 - 30 = 30x30
 - H40 = H40xV15
 - 60 = 60x60
 - H120 = H120xV20 (available as IZS2-IR-H120)

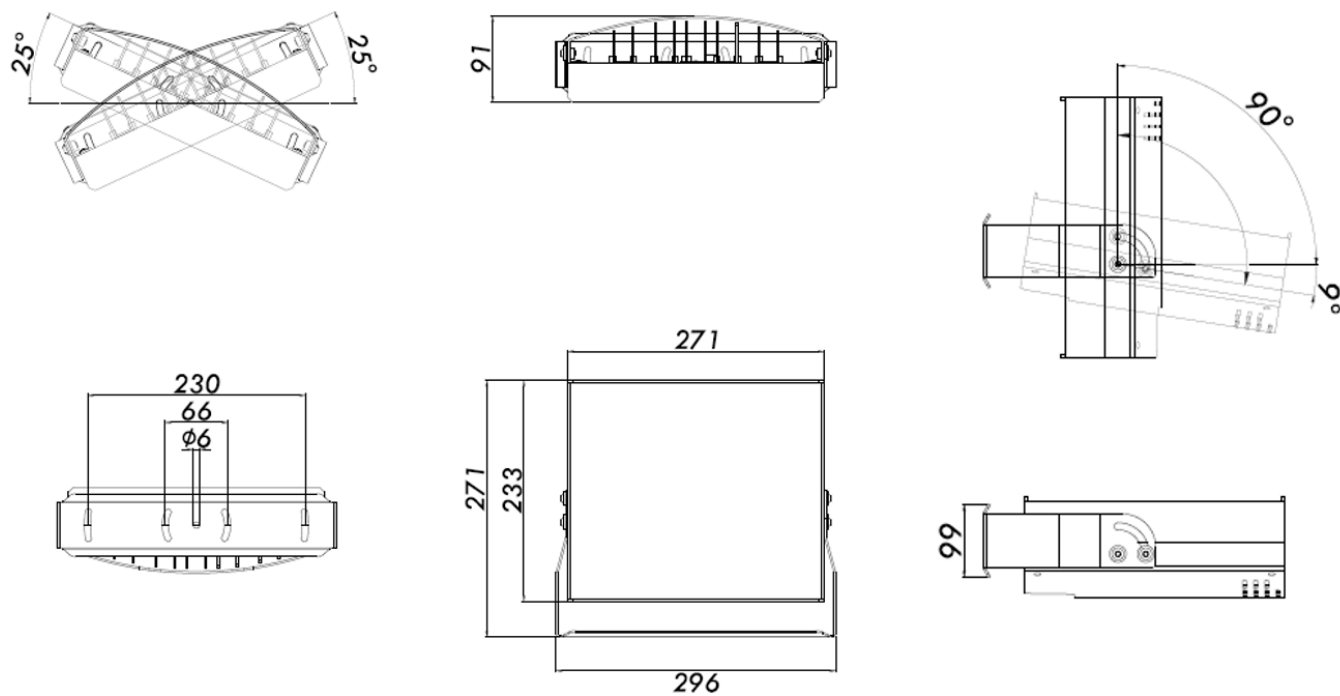
Standard Package Contents

- IZS Strobe Illuminator with outer pan/tilt adjustment bracket
- Power cable
- Signals cable
- Mounting hardware may be included in your package, or packed separately, depending on your site's requirements.

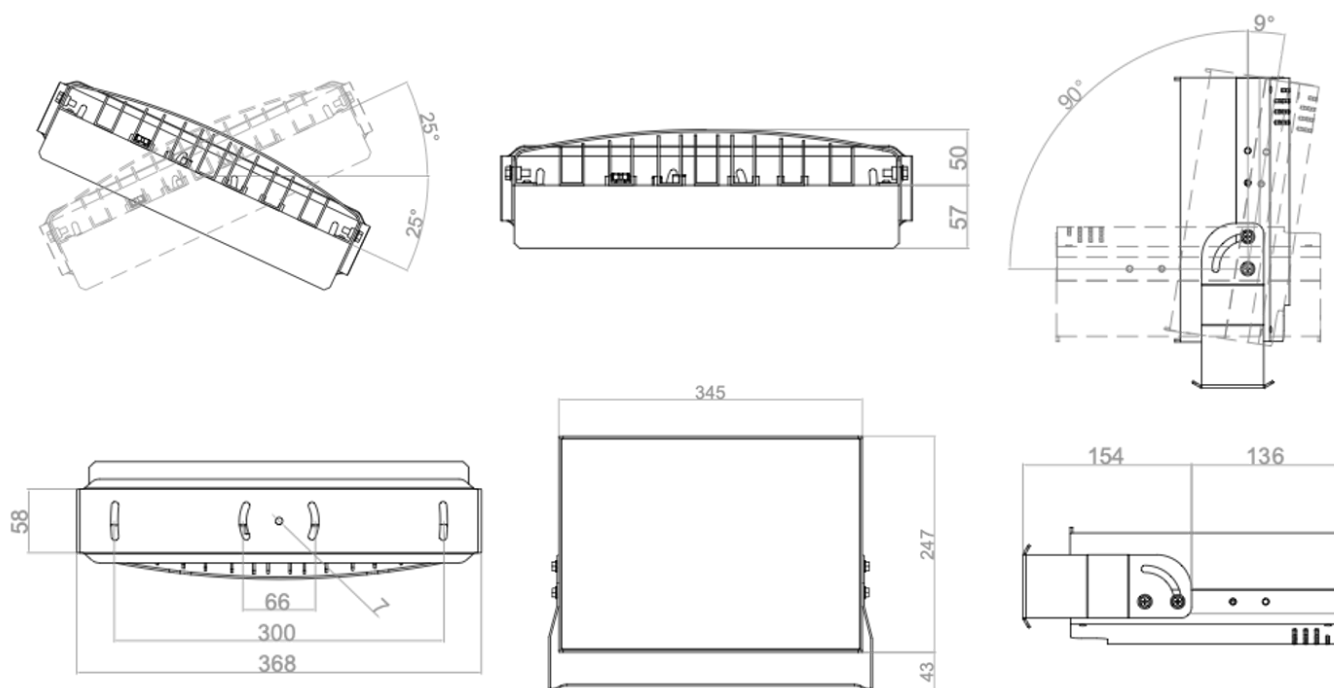
IZS1 Dimensions (mm)



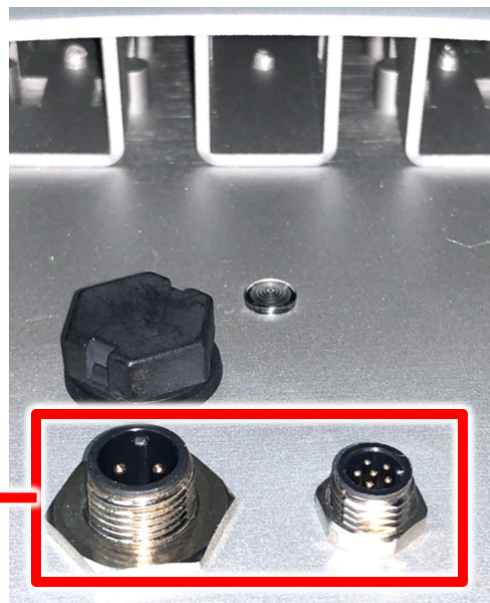
IZS2 Dimensions (mm)



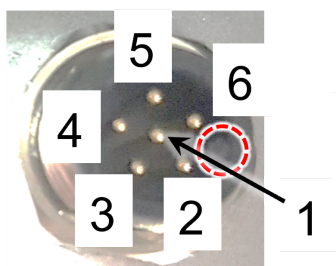
IZS3 Dimensions (mm)



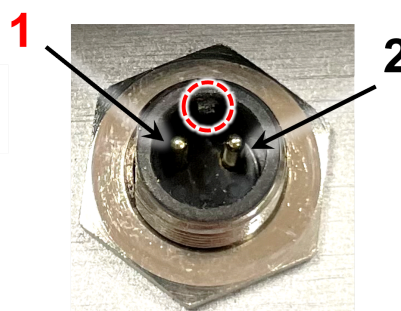
Connector Locations



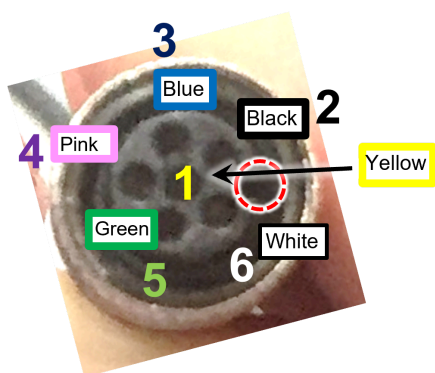
Power/Signals Pinouts



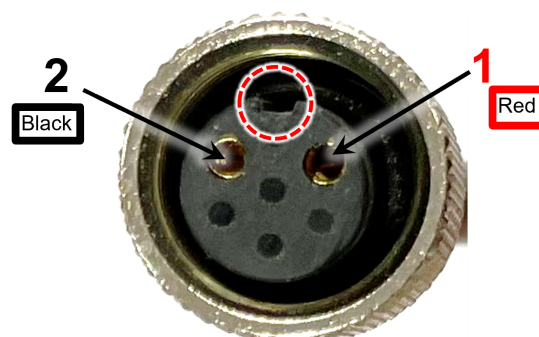
Connector notches indicated by



Pin1 : RED : 24 VDC input
Pin2 : BLACK : Power GND



Pin1 : Yellow : RS485 (+) Input
Pin2 : Black : RS485 (-) Input
Pin3 : Blue : Strobe Input GND
Pin4 : Pink : Unused
Pin5 : Green : Unused
Pin6 : White : Strobe Input (+)



Inex Technologies, LLC
155 Willowbrook Blvd., Suite 130
Wayne, NJ 07470, USA
+1-865-671-1400
www.inextechnologies.com
Sales@inextechnologies.com
Support@inextechnologies.com

© Inex Technologies, LLC - All rights reserved. Specifications are subject to change without notice. All third-party trademarks are the property of their respective owners.

Doc. No. IZS-REV-C-TDSHEET Ver. 2025-07-17

This page was built using the Antora default UI.

The source code for this UI is licensed under the terms of the MPL-2.0 license.