

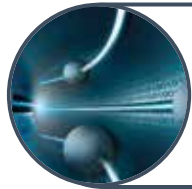


The **IZB600F ALPR** camera features a bollard-shaped design and utilizes IZ600F camera technology. Up to eight IZB600F or IZ600F cameras can be connected to a single Inex ALPR Engine Appliance for AI-based image processing, creating a comprehensive ALPR system.

The IZB600F operates in a wide range of lighting conditions, utilizing enhanced Wide Dynamic Range (WDR+) technology and a built-in IR illuminator. Its motorized lens allows for fully remote camera configuration, eliminating the need for an onsite technician. Designed for reliable, multiyear outdoor operation, the IZB600F ensures long-lasting performance.



Streaming Live Video: Delivers overview video and images of the vehicle and the license plate.



Real-Time ALPR Engine: Less than 1/2 of a second plate processing time.



IZCentral Software Management System: Provides robust, long-term data storage for ALPR data and plate images.



Ultra-Low Light: Provides legible plate images in dim lighting conditions



Integration: Easily integrates with 3rd party systems such as Milestone, LenelS2, Software House, etc. - please call for additional information.

The IZB600F-based ALPR system delivers crystal-clear images, automatically recognized license plate data, and streaming video, providing the most accurate license plate reading solution on the market.

The IZB600F ALPR system supports APIs and directly interfaces with leading parking system provider platforms without requiring additional post-processing components. It integrates seamlessly with Inex's IZCloud cloud-based services, which enhance system capabilities by providing real-time system management, firmware upgrades, performance monitoring, and event storage. IZCloud services also interface with Video Management Systems (VMS), Access Control Systems (ACS), online reservation systems, and other third-party systems, ensuring a comprehensive and seamless solution for your access control, parking, and security needs.

The IZB600F-based systems are used by campgrounds, homeowner associations, healthcare and educational facilities, parking operations, car washes, and other facilities to automate vehicle access and meet security needs.



<h3>IZCentral Software Management System</h3>		<h3>Optional 3rd party integration</h3> <ul style="list-style-type: none"> - Receives License Plate video from all cameras - Processes video into readable data - Multiple cameras' reads can be treated as one event or as separate events. - IZCentral stores data, performs data analytics, generates alarms on white/black lists' hits, and integrates with 3rd party systems.
---	--	--

<p>WEIGAND CODES BLACK/WHITELISTS HITS</p>	<h3>3RD PARTY ACCESS CONTROL</h3> <p>GATE CONTROL & ALERTS</p>	<h3>3RD PARTY SURVEILLANCE/PISM</h3> <p>CONTROL CENTER: ALERT DISPLAY, LP SEARCH</p>	<p>Alerts: SMS, e-mail</p>
--	--	--	----------------------------

IZB600 IN-BOLLARD CAMERA: SLEEK DESIGN, DISCREETLY INTEGRATED

<h3>General</h3> <p>Models ALPR Capture Distance Vehicle Speed Field of View (FOV)</p>	<h3>IZ600F Series</h3> <p>Up to 20 ft (6.1 m) Up to 20 mph (32 km/h) 12 ft (H) x 8 ft (V) (3.7 x 2.4 m)</p>	<h3>Mechanical</h3> <p>Dimensions (W x H x D) Weight</p>	<p>4.7" x 32.6" x 4.7" (119 mm x 828 mm x 119 mm) Diameter of base : 6.5" (165 mm) 10.4 lbs (4.7 kg)</p>
<h3>Optics</h3> <p>Primary Sensor Shutter Type Primary Sensor Resolution Lens Adjustment</p>	<p>Rolling 1920x1080 Motorized</p>	<h3>Environmental</h3> <p>Designed for outdoor use with proper installation. Ingress Protection Operating Temperature Storage Temperature Certifications</p>	<p>IP66 -4 °F to 140 °F (-20°C to 60 °C) -4 °F to 140 °F (-20°C to 60 °C) FCC Part 15 subpart B; CE</p>
<h3>Illumination</h3> <p>LED Wavelengths Number of built-in LEDs LED Beam Angles Compatible External Illuminators</p>	<p>Infrared, Deep Red 4 60°x60° IZL****</p>	<h3>Computing</h3> <p>Compression Codecs Video Streaming</p>	<h3>IZIDPUG</h3> <p>Indoor AI Data Processing Unit NVIDIA® Artificial Intelligence (AI) GPU processor for lightning-fast processing Inex ALPR video analytics for in-depth vehicle analysis Integrated with IZcloud Wide temperature range - operating from 32°F to 113°F (0°C to 45°C) Works with IZB600F Camera and 3rd party ALPR Cameras</p>
<h3>Electrical</h3> <p>Power Input Power Consumption Network Connection</p>	<p>MJPEG, H.264, H.265 RTSP, HTTP</p> <p>12 VDC or PoE 13 Watts 10/100 BaseT Ethernet (auto-sensing)</p>		

© Inex Technologies, LLC. All rights reserved. Specifications are subject to change without notice.