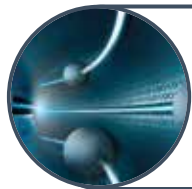




Dual Sensor Technology: Delivers both color and B&W infrared-illuminated images of the vehicle and license plate.



Edge Processing ALPR Engine: Less than ¼ of a second plate processing time.



Vehicle & License Plate Recognition: Plate Type & Plate State of Issue, Missing Plates. Vehicle Detection & Classification, Color, Make & Model.



Anti-Glare Technology: Eliminates headlight glare, providing legible plate images with high contrast.

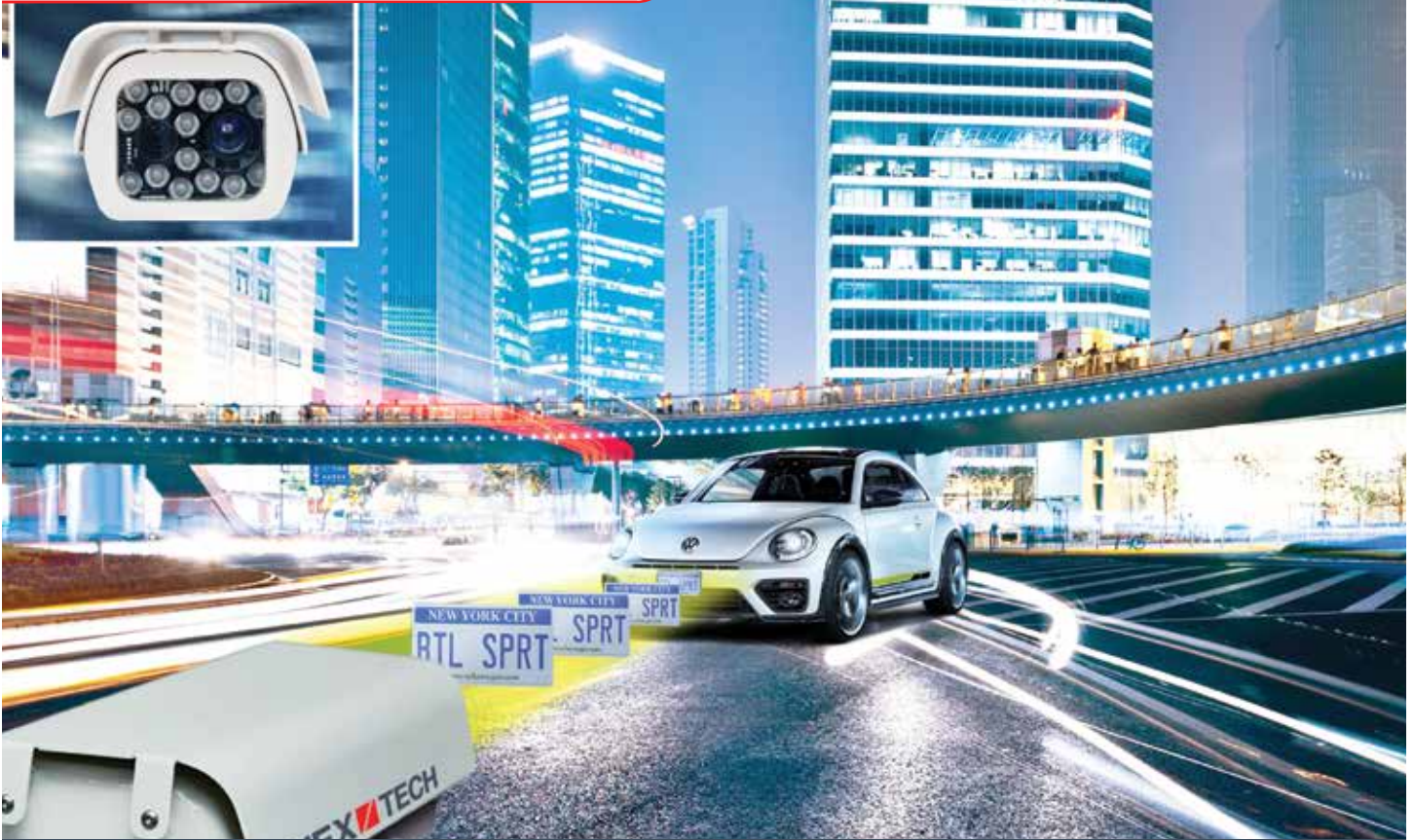


Motorized Zoom and Auto Focus: Easy deployment, seamless calibration, and improved ergonomics.

The **IZA500G** camera is the cornerstone of the most accurate ALPR systems on the market, achieving over 99% license plate reading accuracy. As the high-end model in Inex's camera lineup, it is ideal for parking, access control, and security applications. This all-in-one unit incorporates both IR and color sensors to ensure precise capture of reflective and non-reflective license plates in any lighting condition. The camera employs Inex's advanced anti-glare and multi-illumination techniques to accurately read license plates even at challenging angles in direct sunlight. Its motorized optical system supports ultra-short 5-foot approach lanes and can zoom out to over 70 feet.

The IZA500G camera performs on-edge AI processing with an NVIDIA GPU, processing images within 100 milliseconds. It outputs crystal-clear images, automatically recognized license plate data, vehicle metadata, and streaming video. Its motorized lenses allow for fully remote camera configuration, eliminating the need for an onsite technician. Designed for reliable, multiyear outdoor operation, the IZA500G ensures long-lasting performance.

The IZA500G supports APIs and directly interfaces with leading parking system provider platforms, without requiring additional post-processing components. Additionally, the IZA500G integrates seamlessly with Inex's IZCloud cloud-based services, which enhance system capabilities by providing real-time system management, firmware upgrades, performance monitoring, and event storage. IZCloud services also interface with Video Management Systems (VMS), Access Control Systems (ACS), online reservation systems, and other third-party systems, ensuring a comprehensive and seamless solution for your parking and security needs.



ENSURE SUPERIOR ACCURACY WITH THE AI-POWERED IZA500G ALPR SERIES CAMERA SYSTEM

General

Models	IZA500G Series
ALPR Capture Distance	Short: 5-35 ft (1.5-11 m) Long: 30-70 ft (9-21 m)
Vehicle Speed	Up to 80 mph (129 km/h)
Field of View (FOV)	12 ft (H) x 8 ft (V) (3.7 x 2.4 m)

Optics

Primary Sensor Shutter Type	Global
Primary Sensor Resolution	1920x1080
Secondary Sensor Shutter Type	Rolling
Secondary Sensor Resolution	1920x1080
Lens Adjustment	Motorized

Illumination

LED Wavelengths	Infrared, Deep Red, Visible Warm White
Number of built-in LEDs	15 or 10 IR, 5 Warm White
LED Beam Angles	L-15°x15°, S-40°x16°
Compatible External Illuminators	IZL****

Computing

Processor Type	GPU
Data Storage	12 GB
Compression Codecs	MJPEG, H.264, H.265
Operating System	Linux

Video Streaming	RTSP
Trigger Modes	Triggered and Non-triggered

Electrical

Power Input	24 VDC or 48 VDC/PoE+ (PoE+ requires IZ4POE)
Power Consumption	25 Watts
Network Connection	GigE Ethernet (10/100/1000M)
External Trigger Input	Dry and Wet
Relay Output	Dry Contact

Mechanical

Dimensions (W x H x D)	6.7" x 4.7" x 17.7" (171 mm x 119 mm x 451 mm)
Weight	9.0 lbs (4.1 Kg)

Environmental

Designed for outdoor use with proper installation. Ingress Protection	IP67
Operating Temperature	-22°F to 140°F (-30°C to 60°C)
Storage Temperature	-22°F to 158°F (-30°C to 70°C)
Certifications	FCC Part 15 subpart B; CE

© Inex Technologies, LLC. All rights reserved. Specifications are subject to change without notice.